



Property Highlights

5-mi. radius pop. 139,478
 \$53,584 avg. HH income


Out Parcels

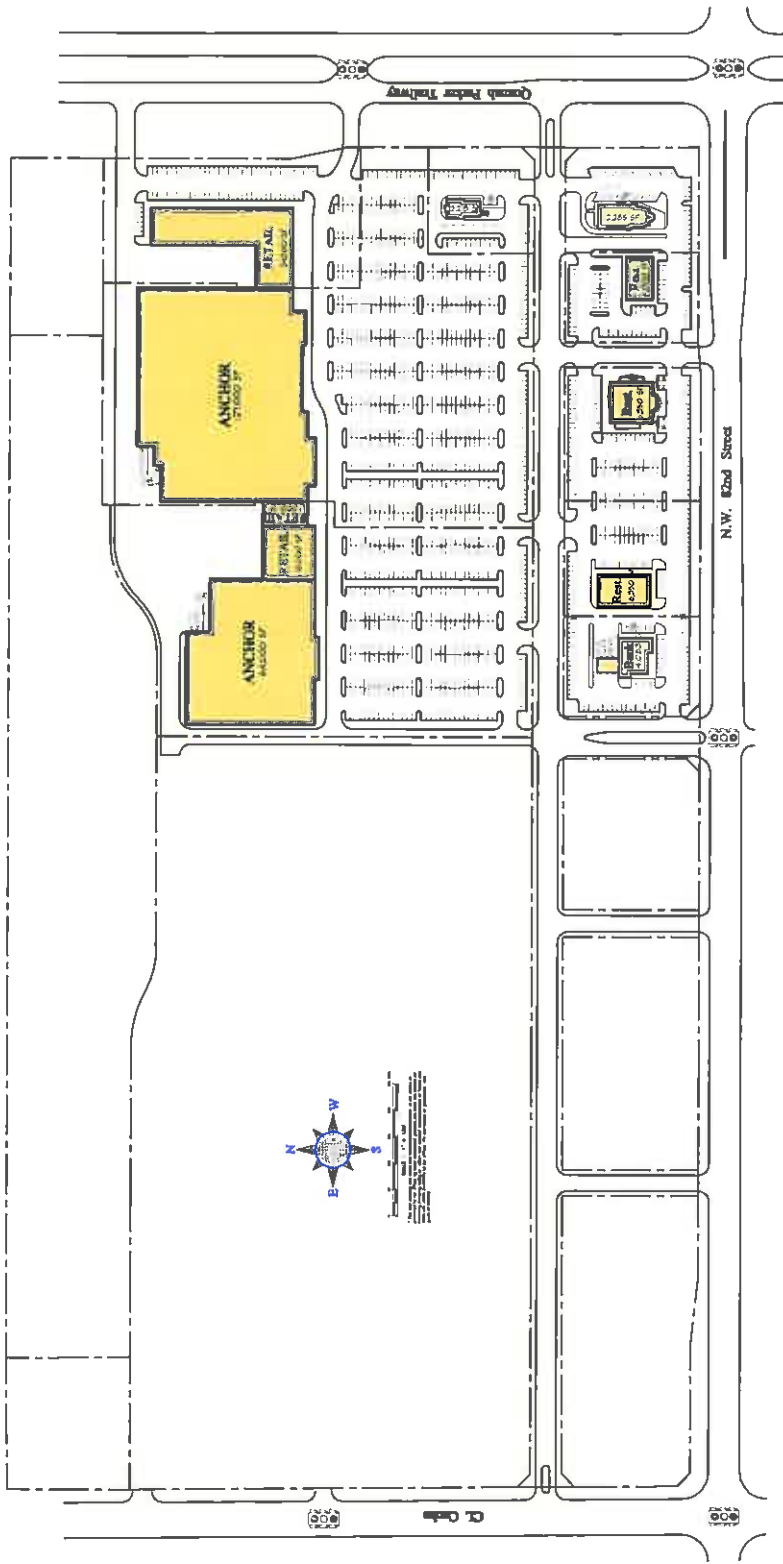
Out Parcels Available



LOCATION

Lawton Crossing Lawton, Oklahoma

 A Development Of
HUNT PROPERTIES, INC.



<p>DATE LATE</p> <p>REVISIONS</p>	<p>Hart Properties, Inc. 1000 North Lincoln Oklahoma City, OK 73102 Phone: (405) 241-1100 Fax: (405) 241-1101 www.hartproperties.com</p>	<p>PROJECT NO. 2008-075</p> <p>DATE 02-28-2009</p> <p>SCALE 1/4" = 1'-0"</p> <p>DESIGNED BY CE / LB</p> <p>CHECKED BY CE / LB</p>	<p>CONCEPTUAL SITE PLAN</p> <p>SP-1</p>
-----------------------------------	---	---	---

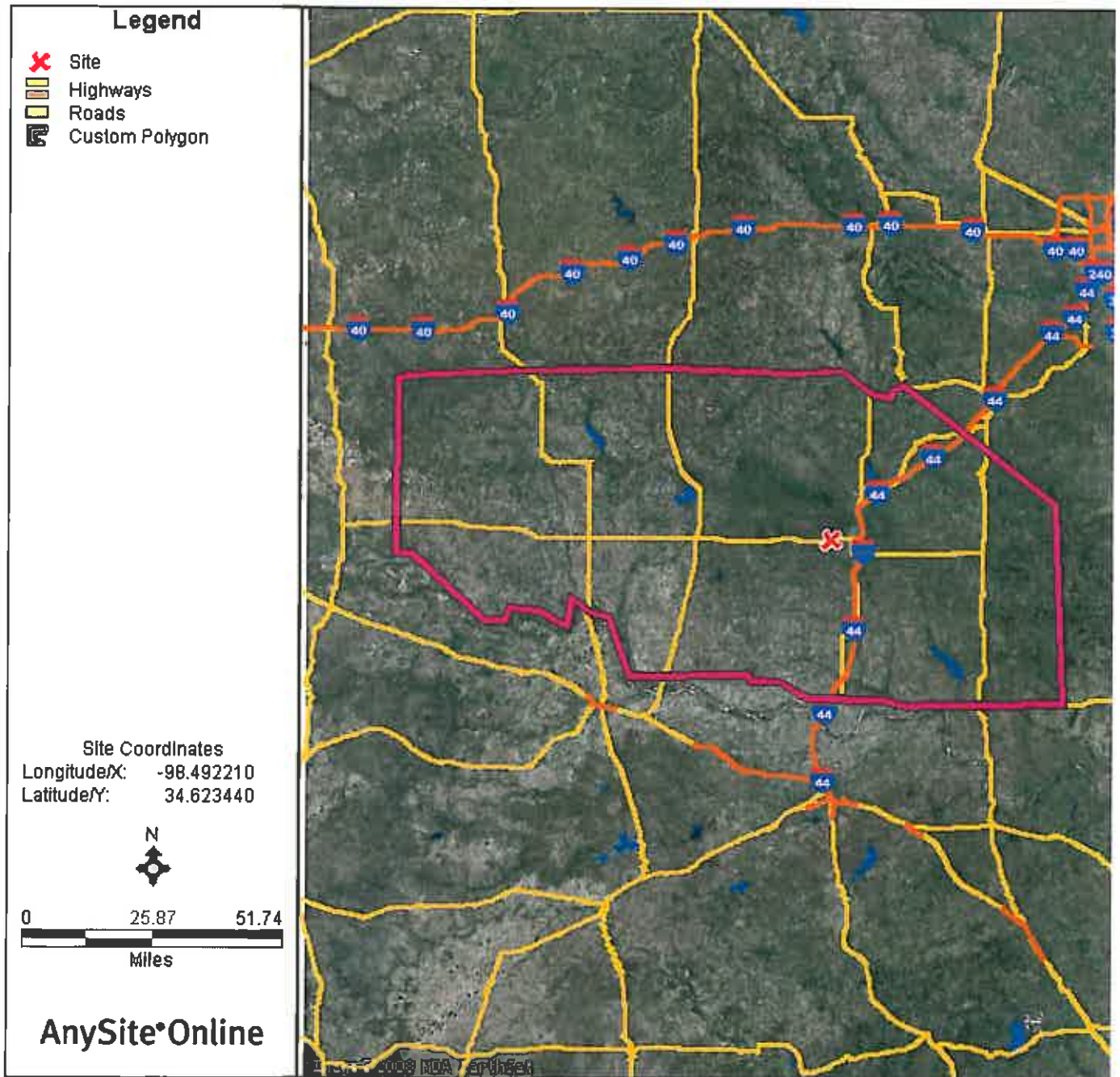
Lawton Marketplace
 Cache Road & N.W. 82nd Street
 Lawton, Oklahoma

Lawton-Poly

9/15/2009

Coordinates Longitude: -98.492210
Latitude: 34.623440

Custom
Polygon



Lawton-Poly

9/15/2009

Coordinates Longitude: -98.492210
Latitude: 34.623440Custom
Polygon**POPULATION**

1990 Total Population	238,205
2000 Total Population	239,076
2008 Total Population	236,072
2013 Total Population	241,381
% Population Change 1990-2000	0.37%
% Population Change 2000-2008	-1.26%
% Population Change 2008-2013	2.25%

HOUSEHOLDS

1990 Total Households	86,307
2000 Total Households	88,209
2008 Total Households	94,977
2013 Total Households	98,393
% Households Change 1990-2000	2.20%
% Households Change 2000-2008	7.67%
% Households Change 2008-2013	3.60%

2008 RACE

% 2008 White Population	74.86%
% 2008 Black Population	12.07%
% 2008 American Indian/Alaska Native	3.66%
% 2008 Asian/Hawaiian/Pacific Islander	1.66%
% 2008 Other Population (Incl 2+ Races)	7.76%
% 2008 Hispanic Population	9.26%
% 2008 Non-Hispanic Population	90.74%

INCOME

2008 Per Capita Income	\$20,425
2008 Median Household Income	\$34,963
2008 Average Household Income	\$50,768
% 2008 Household Income < \$10,000	10.21%
% 2008 Household Income \$10,000-\$14,999	8.78%
% 2008 Household Income \$15,000-\$19,999	7.81%
% 2008 Household Income \$20,000-\$24,999	8.32%

Lawton-Poly

9/15/2009

Coordinates Longitude: -98.492210
Latitude: 34.623440

	Custom Polygon
% 2008 Household Income \$25,000-\$29,999	7.45%
% 2008 Household Income \$30,000-\$34,999	7.47%
% 2008 Household Income \$35,000-\$39,999	7.41%
% 2008 Household Income \$40,000-\$44,999	7.00%
% 2008 Household Income \$45,000-\$49,999	7.07%
% 2008 Household Income \$50,000-\$59,999	10.34%
% 2008 Household Income \$60,000-\$74,999	8.97%
% 2008 Household Income \$75,000-\$99,999	6.05%
% 2008 Household Income \$100,000-\$124,999	1.56%
% 2008 Household Income \$125,000-\$149,999	0.77%
% 2008 Household Income \$150,000-\$199,999	0.44%
% 2008 Household Income \$200,000-\$249,999	0.07%
% 2008 Household Income \$250,000-\$499,999	0.25%
% 2008 Household Income \$500,000+	0.00%
2008 Average Household Size	2.3
% 2008 Total Owner Occupied Housing Units	65.64%
% 2008 Total Renter Occupied Housing Units	34.36%
2008 Total Daytime Population	216,062
2008 Total Daytime Work Population	83,294
2008 Total Establishments	8,198