



Property Highlights

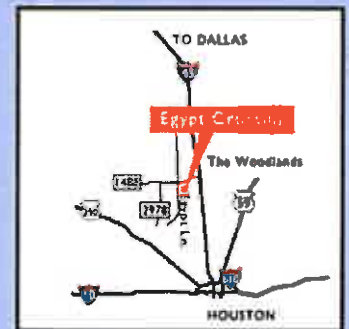
5,000 SF Available
 5 mi. trade area - 83,094
 \$158,000 avg. HH income
 41,000 vpd

Tenants

The Home Depot
 Borders Mexican Grill
 Eden Café
 All Floors & More
 Sam Star III
 Hector's

Out Parcels

Wachovia
 Whataburger
 Applebee's
 KFC / Long John Silver
 NTB

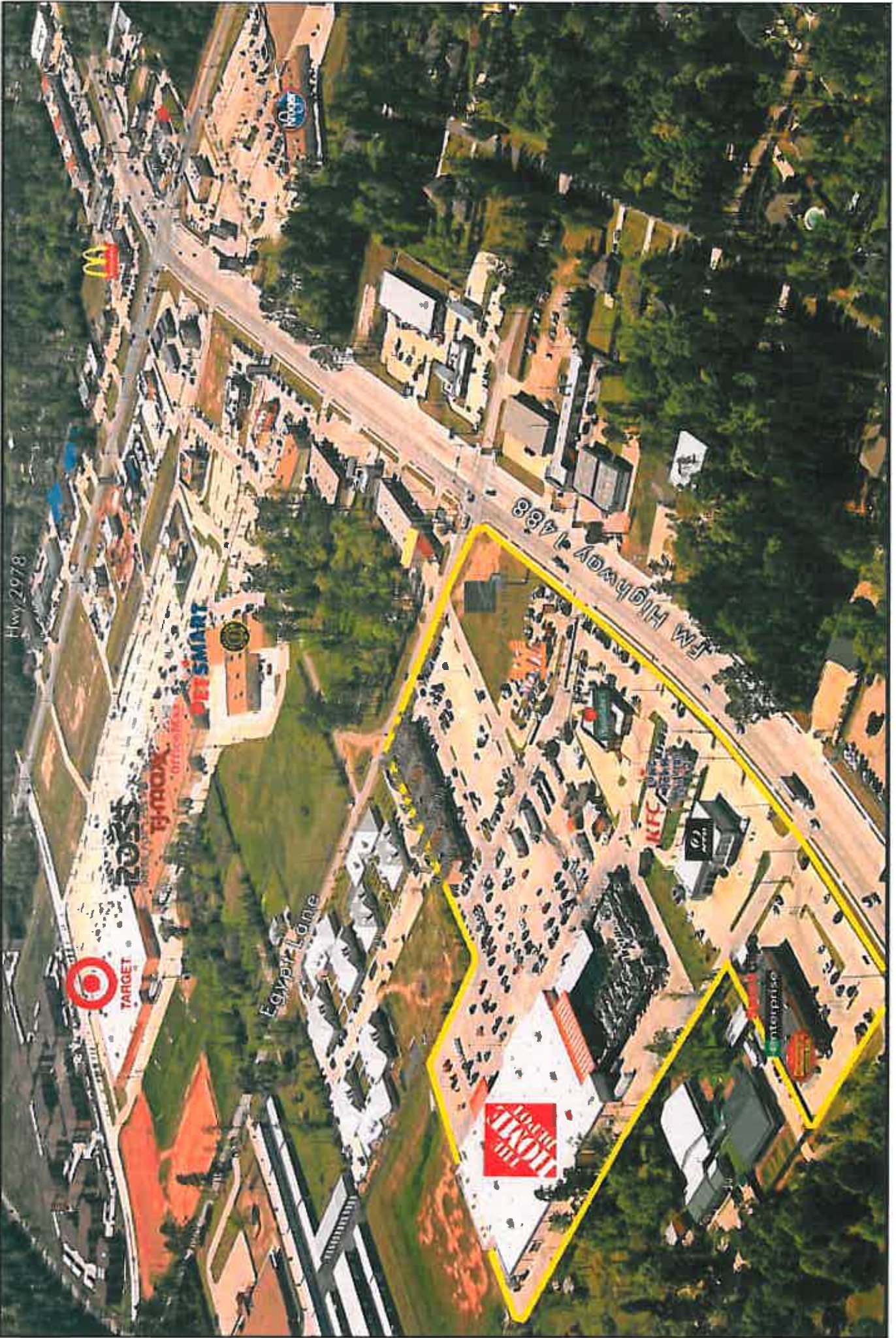


LOCATION

Egypt Crossing

The Woodlands, Texas

A Development Of
HUNT PROPERTIES, INC.



Egypt Crossing

9/14/2009

Coordinates Longitude: -95.558000
Latitude: 30.219700

	5.0 Mile Ring 78.54 sq/mi	10.0 Mile Ring 314.16 sq/mi
POPULATION		
1990 Total Population	13,604	109,770
2000 Total Population	49,677	178,109
2008 Total Population	81,382	257,490
2013 Total Population	106,148	322,303
% Population Change 1990-2000	265.16%	62.26%
% Population Change 2000-2008	63.82%	44.57%
% Population Change 2008-2013	30.43%	25.17%
HOUSEHOLDS		
1990 Total Households	4,715	38,900
2000 Total Households	16,442	62,762
2008 Total Households	27,759	92,155
2013 Total Households	34,311	108,775
% Households Change 1990-2000	248.72%	61.34%
% Households Change 2000-2008	68.83%	46.83%
% Households Change 2008-2013	23.60%	18.03%
2008 RACE		
% 2008 White Population	90.60%	83.97%
% 2008 Black Population	1.84%	4.57%
% 2008 American Indian/Alaska Native	0.12%	0.22%
% 2008 Asian/Hawaiian/Pacific Islander	2.77%	2.22%
% 2008 Other Population (Incl 2+ Races)	4.67%	9.03%
% 2008 Hispanic Population	9.10%	16.21%
% 2008 Non-Hispanic Population	90.90%	83.79%
INCOME		
2008 Per Capita Income	\$37,174	\$31,144
2008 Median Household Income	\$82,731	\$60,270
2008 Average Household Income	\$108,983	\$87,021
% 2008 Household Income < \$10,000	3.23%	4.78%
% 2008 Household Income \$10,000-\$14,999	1.56%	3.94%
% 2008 Household Income \$15,000-\$19,999	3.61%	4.15%
% 2008 Household Income \$20,000-\$24,999	1.88%	4.19%

Egypt Crossing

9/14/2009

Coordinates Longitude: -95.558000
Latitude: 30.219700

	5.0 Mile Ring 78.54 sq/mi	10.0 Mile Ring 314.16 sq/mi
% 2008 Household Income \$25,000-\$29,999	3.12%	4.09%
% 2008 Household Income \$30,000-\$34,999	2.53%	4.67%
% 2008 Household Income \$35,000-\$39,999	2.13%	4.39%
% 2008 Household Income \$40,000-\$44,999	3.16%	5.30%
% 2008 Household Income \$45,000-\$49,999	3.00%	5.19%
% 2008 Household Income \$50,000-\$59,999	5.64%	9.04%
% 2008 Household Income \$60,000-\$74,999	12.82%	13.54%
% 2008 Household Income \$75,000-\$99,999	23.66%	17.83%
% 2008 Household Income \$100,000-\$124,999	15.13%	7.88%
% 2008 Household Income \$125,000-\$149,999	8.41%	4.79%
% 2008 Household Income \$150,000-\$199,999	5.60%	3.08%
% 2008 Household Income \$200,000-\$249,999	1.57%	0.78%
% 2008 Household Income \$250,000-\$499,999	2.87%	2.28%
% 2008 Household Income \$500,000+	0.09%	0.06%
2008 Average Household Size	2.9	2.8
% 2008 Total Owner Occupied Housing Units	89.33%	74.10%
% 2008 Total Renter Occupied Housing Units	10.67%	25.90%
2008 Total Daytime Population	73,627	269,996
2008 Total Daytime Work Population	31,389	141,430
2008 Total Establishments	3,952	17,143